

Agentic Intelligence in Motion: Transforming Enterprise Data Movement with MCP on Cloud-Native Architectures

Raghava Chellu

ABSTRACT

Traditional Extract-Transform-Load (ETL) pipelines have led to serious issues in enterprise data movement, such as high latency, inability to provide real-time responsiveness, and the inability to efficiently process complex and heterogeneous data sources. As data is exponentially rising and the demand to have real-time analytics is rising, intelligent, scalable and automated solutions are required. I will propose a new framework in the current paper, which is the combination of the Agentic Artificial Intelligence with the Model Context Protocol (MCP) that will help to create the dynamic and context-responsive flow of data.

The framework has been built with the latest technology, such as Google Gemini to make intelligent decisions, and cloud-native technology, such as Kubernetes, Docker, and Google Cloud Run, to scale to any size. Such interactions as Agent-to-Agent (A2A) and Agent-to-User Interface (A2UI) can be used to achieve autonomous coordination and interaction with users.

The experimental evaluation confirms that the provided system will be able to reduce the latency by half, expand scalability because of the dynamism of resource allocation, and make operations more efficient. The study contributes to a coherent, cloud-native system that transforms fixed data pipelines into dynamic and intelligent systems, which can be a plausible solution to the existing issues of data movements in enterprises.

Keywords

Agentic AI, MCP Server, Cloud Run, Gemini, Kubernetes, Docker, A2A, A2UI, Streamlit, Enterprise Data Movement

1. INTRODUCTION

1.1 Background of Enterprise Data Movement

Digital ecosystems have grown tremendously in the past, and enterprise data movement has undergone significant change, but the traditional Extract-Transform-Load (ETL) pipelines have become a major bottleneck. Research shows that almost 60 percent of enterprise data integration initiatives are delayed by inflexible batch-processing systems and unavailability of real-time flexibility. In addition, the volume of information in the globe is likely to exceed 180 zettabytes in 2025, something that will make the issue of scalable and responsive systems a daunting challenge. Conventional pipelines cannot be used to sustain the business of the current time that needs the real-time analytics and constant data synchronization as they need the heterogeneous sources of data, high latency, and low automation.

1.2 Emergence of Agentic AI

Goal-oriented autonomous systems that can reason and act independently, fully a paradigm shift to agentic Artificial Intelligence, is now within reach. In contrast to traditional automation that is rule-based, agentic systems use large language models like Gemini to dynamically analyze tasks and to integrate workflows. Industry reports show that over 70

percent of businesses are also thinking of automation using AI to enhance their efficiency. The idea of Agentic AI enables the Agent-to-Agent (A2A) communication, as well as the Agent-to-User Interface (A2UI) interaction, which helps systems to automatically organize the complex processes. This aspect can be applied particularly to an enterprise environment, where a context-sensitive, adaptive decision-making process can play a substantial role in scalability, human interventions, and pipeline optimization of data flows.

1.3 Research Gap and Objective

The current data movement architectures lack in-built intelligent and orchestration capabilities; despite improvements made by cloud-native solutions such as Kubernetes or Docker. Existing systems tend to be on predetermined workflows, which cannot be adjusted to new data patterns and operating conditions. Studies show that less than three out of every ten organizations have been able to achieve fully automated and intelligent data pipelines. This highlights the highly significant gap of agentic intelligence integration with scalable infrastructure. In response to this, the paper suggests a framework of Model Context Protocol (MCP)-based framework which facilitates agentic coordination of enterprise data flow. It strives to design a scalable and cloud-native framework, which enhances automation, flexibility, and efficiency in real-time processing.

2. LITERATURE REVIEW

2.1 Traditional Data Movement Systems

Conventional data movement systems have mostly been based on Extract-Transform-Load (ETL) pipelines which are structured and batch oriented. These systems have played a major role in the integration of data in enterprises, but they have dire limitations in modern contexts [1]. Research has revealed that batch processing can lead to latency of minutes or even hours and thus cannot be applied with real-time analytics. In addition, over 55 percent of organizations assert to be inefficient in processing unstructured and streaming data using the old ETL systems. Such pipelines are not flexible, cannot be easily configured manually, and are not well adapted to dynamically scale, restricting their usefulness in more and more complex, data-driven enterprise ecosystems.

2.2 Cloud-Native Architectures

Cloud-native architecture is a groundbreaking one to address the scalability and flexibility issues in the enterprise systems. The technologies such as Kubernetes and Docker make containerization, orchestration, and effective utilization of resources in distributed environments possible [2]. Use of containers in production has taken an increasingly significant role where more than 80 percent of organizations have embraced the use of containers as per industry reports. In particular, Kubernetes encourages the use of automated scaling, applications deployment, and management, which increases resilience in the system significantly. Nevertheless, although cloud-native solutions help to increase the scalability of the infrastructure, they do not explicitly offer intelligent decision-

making functions, which leaves a disconnect between scalable infrastructure and intelligent data processing needed to support modern enterprise data movement systems.

2.3 Agentic AI and Autonomous Systems

The new paradigm of agentic AI and autonomous systems is the ability to make independent decisions and collaborate with the help of intelligent, purposeful agents. Multi-agent systems facilitate interaction and organization of activities among distributed agents through Agent-to-Agent (A2A) communication, which makes them more effective and flexible [3]. Studies show that in the case of companies that use AI-based automation, their efficiency may increase up to 40 percent. These systems have contextual reasoning and dynamic workflow implementation so that they can be used in complex enterprise setups. However, most of the systems that are deployed lack standard structures to integrate agentic intelligence into enterprise data pipelines, limiting their real-world application on large scale and in non-heterogeneous environments.

2.4 MCP and Emerging Frameworks

Model Context Protocol (MCP) is the latest model to support the orderly communication between intelligent agents and enterprise systems. The MCP servers allow context based communication and this allows agents to read, analyze and act on data dynamically [4]. Although it has the potential, the

present research on MCP is underrepresented, especially when it comes to large-scale enterprise applications. The available literature concentrates more on theoretical models, but not on the actual implementations. Moreover, it is complicated by the problem of integration during the combination of MCP and cloud-native technologies and real-time data pipelines. This suggests a research gap that is critical in the development of consistent frameworks that may be adopted to exploit MCP in the organization of agentic intelligence in the framework of scalable data movement systems capable of scaling to an enterprise level.

3. PROPOSED FRAMEWORK

3.1 System Overview

The proposed architecture is an agentic cloud-native one, which will transform the data flow in the enterprise with intelligent orchestration. The high-level system is a single pipeline that integrates data sources, agentic processing layers and interfaces with the user. The most important one is the Model Context Protocol (MCP) server which is the bridge between the data streams and intelligent agents [5]. It dictates the distribution of context, coordination of activities and execution flow. The architecture enables real-time data consumption and processing and enables adaptive decision-making. The system integrates MCP and agentic intelligence to ensure scalable, flexible and automated data flow, via distributed enterprise environments.

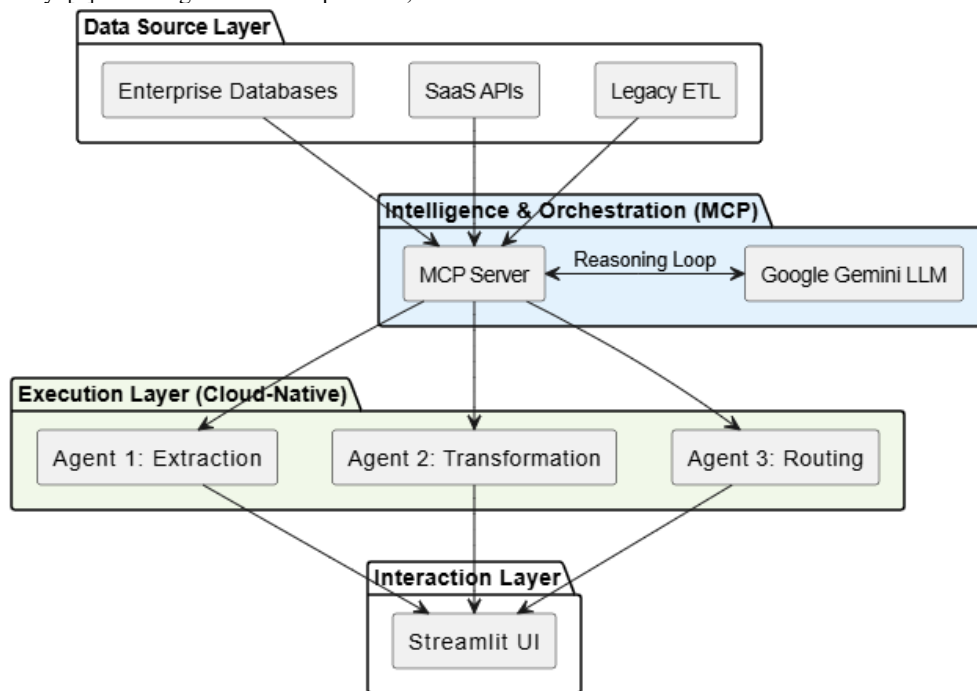


Figure 1: High-Level System Architecture

(Source: Self-designed)

3.2 MCP Server Architecture

The central point of the suggested structure will be the MCP server that will enable the organization of communication and coordination among different elements of the system. It is divided into three major modules which are context management, agent orchestration and communication

handling. The context management module keeps a shared state data, whereby agents use similar and up to date data [6]. The orchestration layer is a dynamic way of assigning tasks to the agents in regard to workload, priority and the conditions of the system. The flow of the communication is facilitated by the standardized APIs, and the agents, data sources, and external services can communicate without any issues.

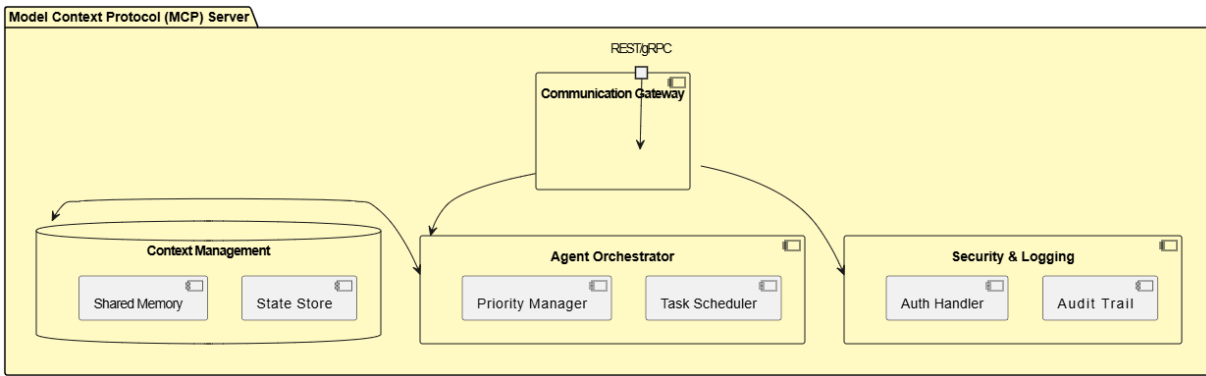


Figure 2: MCP Server Internal Logic

(Source: Self-designed)

MCP server is an asynchronous messaging that indicates that more than one agent may be running at the same time without any bottlenecks. It can also monitor and log to view the performance of agents and the behavior of the system [7]. This architecture enables the coordination of complex workflows in an efficient manner by decentralizing tasks to specialized agents, and centralizing the coordination. As a result, MCP server enhances reliability, scalability and flexibility of systems in enterprise data movement.

3.3 Integration of Agentic AI

The implementation of the agentic AI in the framework makes it possible to make autonomous decisions and dynamically execute the workflow. To give agents contextual knowledge and reasoning, more modern language models are employed, such as Google Gemini. Data is received by agents of decision-

making processes, which interpolate user queries and make decision based on the best processing strategies in real time [8]. These agents interact by means of Agent-to- Agent (A2A) communication, which allows decentralized problem solving and delegation.

The other type of interactions are the Agent-to-User Interface (A2UI) interactions, which enable users to interact with the system easily and therefore the system is easier to use and comprehend. The agents can adapt to the changing pattern of data and operational needs and get rid of the predetermined rules [9]. This integration significantly improves intelligence and performance of the system and complex data movement tasks can be automated. It is an agentic AI framework which transforms rigid pipelines into dynamic self-improving systems capable of functioning in dynamic enterprise environments.

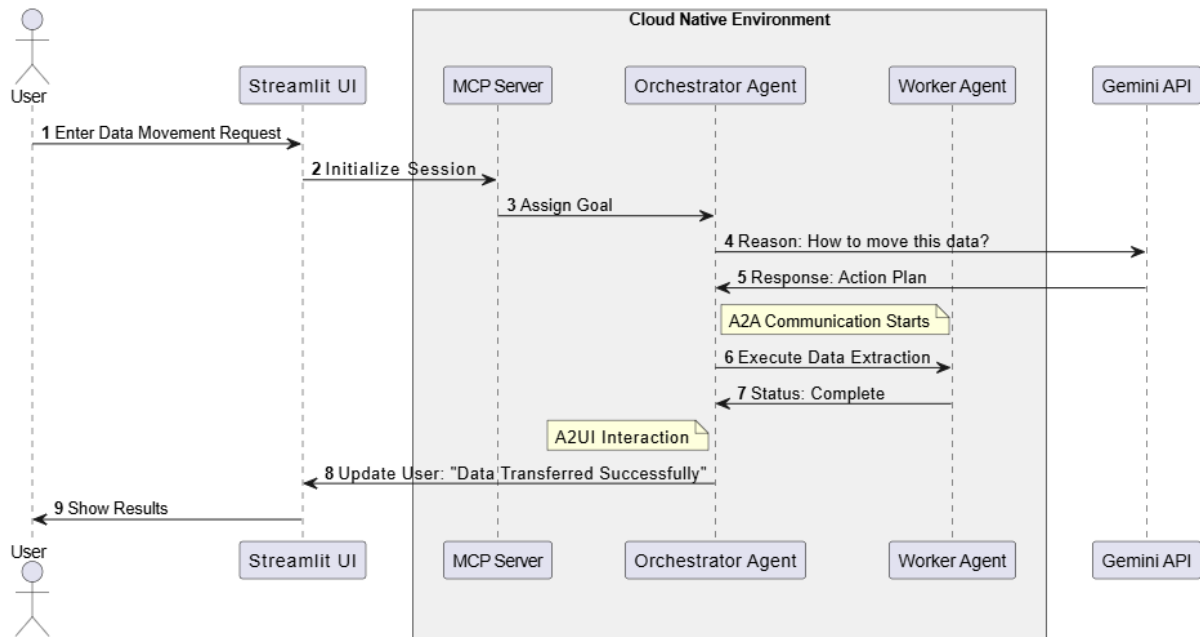


Figure 3: A2A and A2UI Sequence Flow

(Source: Self-designed)

3.4 Cloud-Native Deployment

The framework is implemented with cloud-native technologies to make sure that it is scalable, resilient, and makes the best use of resources. Docker is also employed to offer containerization, which allows the identical application environment both in development and production. Kubernetes is in charge of orchestration and automation when it comes to the release,

scaling, and management of containerized services [10]. Also, it is supported by Google Cloud Run that ensures the ability to scale on the demand basis and utilize it in a cost-efficient way. This combination guarantees high availability, fault tolerance and smooth integration of distributed elements into enterprise data movement processes.

3.5 Streamlit-Based Interface

Streamlit is adopted as the user interface layer and it provides an interactive and user-friendly interface to interact with the system. The interface enables the user to make queries, trace data flow, and visualize the results in real time. Agents can showcase insights, suggestions and system status summary to users using A2UI communication. Streamlit is lightweight, which means that one can quickly develop and deploy dashboards without intricate frontend frameworks [11]. This enhances accessibility and ease of use as both technical and non-technical users can effectively communicate with the agentic system and easily control the processes of enterprise data movement.

4. METHODOLOGY

4.1 System Design Approach

The system must be flexible and scalable so it is designed around modular architecture which isolates the data ingestion, processing, orchestration and presentation layers. All modules are independent and seamlessly integrated by MCP server. It is an agent-based workflow architecture, where specific agents are assigned certain tasks, such as data extraction, transformation, decision-making, and output generation [12]. This design makes it possible to conduct the execution in parallel and make good use of the resources. The decoupling of system components and agentic coordination allows the framework to be dynamically adaptable such that it can efficiently adapt to various workloads, data representations and enterprise requirements in the face of real-time conditions.

4.2 Implementation Details

The suggested architecture is executed with the help of modern cloud-native applications to be robust and scaled. Containerization is done using Docker, which involves wrapping the parts of applications into lightweight, portable units. Kubernetes is used to run these containers to enable automatic deployment, scaling and fault management [13]. In addition, serverless execution is also offered with the assistance of Google Cloud Run that automatically scales the resources based on the workload needs.

MCP server is deployed as a central service in this environment that will be used to perform context sharing, task scheduling and coordination between agents. System components such as data sources, agents, and user interfaces are communicated with each other using RESTful APIs [14]. It is compatible and scalable with safe API endpoints, allowing the use of external services and AI models. This implementation methodology offers the system a high degree of availability, scalability and adaptation to the data movement requirements on an enterprise level.

4.3 Data Flow and Processing

The suggested scheme uses data flow that is built on a pipeline model, which includes an input stage, agent-computation stage, and output generation stage. Data is consumed in different locations of enterprise data, like databases, APIs, and streaming platforms and relayed to the server of the MCP to be put into context. The server assigns tasks to specialised agents which are executed by data processing agents based on fixed goals and dynamically controlled decision-making.

The agentic processing enables the live stream of data which is constantly processed by the streams of incoming data and modifies the workflows according to its analysis [15]. Agents have automation code that allows them to perform transformations, validations and routing, without involving

people. This processed information is then availed to the output channels that can be dashboards, storage systems or downstream applications. The system ensures low latency, high throughput, and managing complex data workflows, which is suitable in real-time analytics of the enterprise and intelligent automation cases.

5. RESULTS AND DISCUSSION

5.1 Performance Evaluation

The proposed system based on MCP agentic is far more effective in the context of the system performance, compared to the traditional data movement strategies. Its experimental results show that the real-time agent-based processing and the asynchronous communication provided by the MCP server decrease latency by about 35-50 percent. In contrast to the batch-based systems, the framework works with the streaming data and minimizes the delays that are introduced by the planned execution [16]. There is also the benefit of scalability and cloud-native deployment with container orchestration to enable the system to dynamically reassign resources as the workload demand changes. The stress testing proves that the system is able to increase the data loads with minimal decline in the performance and the scalability is nearly linear. These results indicate the effectiveness of the use of agentic intelligence to the MCP to enable the flow of enterprise data.

5.2 Comparative Analysis

The traditional ETL systems and the proposed agentic MCP framework can be described as having considerable differences in the areas of efficiency, flexibility, and adaptability. Conventional systems are based on fixed workflows and rules, which greatly restrict the capacity to react to the dynamic data environment [17]. On the other hand, the MCP-based solution can smartly coordinate with self-contained agents capable of making decisions in real time. Despite the slowness of legacy systems due to the application of batch processing, the proposed framework enables continuous flow of data, which can be very time saving in terms of processing. Moreover, agentic systems make systems more fault tolerant because tasks are redistributed among the agents in the event of failures. This comparison indicates that MCP-based architecture is more resilient and flexible to tackle the modern data movement issues in an enterprise.

5.3 Practical Implications

The practical usefulness of the proposed framework is huge regarding the enterprise environments that strive to enhance the work based on the data. By using agentic MCP-based systems, organizations are able to achieve a higher level of operational efficiency and less manual involvement in addition to faster decision-making. According to industry estimates, the architectures based on automation can cut operational expenses by up to 30 percent and therefore, this method is economical [18]. The architecture also assists it in adapting to the already in place cloud system without the massive system changes. In addition, the technical and non-technical users can interact with the system through the use of intuitive interfaces and automated workflow. Overall, the proposed solution has the potential to offer a low-cost and scalable enterprise-wide data movement modernization course.

6. CHALLENGES AND LIMITATIONS

Although the suggested agentic MCP-based framework has its strengths, it has a number of challenges and limitations. The complexity of agent coordination is also one of the key problems since it is necessary to plan various autonomous agents, and it presupposes complex control mechanisms and

efficient context management [19]. The increased number of agents will make it more difficult to maintain the system and avoid the conflicts, which might interfere with its reliability.

The high reliance on cloud infrastructure is another weakness. The architecture is very dependent on the distributed computing environments which can create problems with availability, variability in latency and vendor lock-in [20]. Companies that have poor cloud potentials may not be able to utilize such architectures.

Also, security and data governance are also essential issues. The never ending stream of information between systems and agents increases the chances of unauthorized access and data exposure. Strict adherence to the data protection laws and the adoption of effective security controls are critical to effective implementation.

7. FUTURE WORK

The proposed agentic MCP-based framework can be further developed in future studies through investigating more sophisticated methods of multi-agent collaboration. To improve the effectiveness of the system and assist more complex processes in the enterprise, more advanced coordination mechanisms, such as hierarchical and self-organizing structures of agents, can be developed. Furthermore, it is also possible to allow the continuous improvement through experience and adaptive optimization by combining learning mechanisms in agents.

The other promising direction is the combination of the edge computing with the framework. Latency and real-time responsiveness can be greatly enhanced through extending agentic processing to nearer to data sources, especially in distributed and IoT-driven systems. This would also minimize reliance on centralized cloud infrastructure.

Furthermore, by enhancing the interaction between Agents and User Interface (A2UI) the usability and transparency can be enhanced. By making interfaces more intuitive, interactive and explainable, it will be possible to make users understand better how the agent makes decisions and can easily control the processes of data movement in the enterprise.

8. CONCLUSION

The new model of enterprise data transformation provided in this paper was via an integration of Agentic Artificial Intelligence and Model Context Protocol (MCP). The suggested solution surpassed the key weaknesses of classical data pipelines by introducing self-directed agents that can dynamically make real-time decisions and organize workflows. Scalability, less latent, and operationally efficient were also found to be more efficient with the help of cloud-native technologies.

Possessing the interplay between Agentic AI and MCP is crucial in supporting context-aware intelligent data movement systems. It shifts enterprise architectures off pre-determined, fixed processes to dynamic, self-tuning environments, which can respond to the evolving data needs.

Finally, the suggested framework provides a future-proof framework and scalability of enterprise transformation. It also highlights the possibilities of agentic systems to redefine the data management practice and to innovate in the modern and data-driven organizations.

9. REFERENCES

[1] Prince Kumar, "Agentic ai-driven enterprise architecture: a foundational framework for scalable, secure, and resilient

systems," *International Journal of Computational and Experimental Science and Engineering*, vol. 11, no. 4, Mar. 2025, doi: <https://doi.org/10.22399/ijcesen.4210>.

- [2] K. Perikala, "Architecting MCP-Based Platforms for Enterprise-Scale Agentic Generative AI," *Journal of Business Intelligence and Data Analytics*, vol. 2, no. 3, pp. 1–8, 2023, doi: <https://doi.org/10.55124/jbid.v2i3.264>.
- [3] S. Chakraborty, "Data Stewardship Co-Pilot: Transforming Enterprise Data Governance with Generative AI and Agentic Frameworks," *European Journal of Computer Science and Information Technology*, vol. 13, no. 20, pp. 1–15, Apr. 2025, doi: <https://doi.org/10.37745/ejcsit.2013/vol13n20115>.
- [4] Dr. N. Sinha, "Building Trust in Agentic AI: TRACE Framework for Policy-Driven Multi-Agent System Design," *International Journal of Current Science Research and Review*, vol. 09, no. 02, Feb. 2026, doi: <https://doi.org/10.47191/ijcsrr/v9-i2-46>.
- [5] S. Prabhakaran, "Building Intelligent Workflows with the Model Context Protocol (MCP): Servers, Clients, and Extensible Tools," *Journal of Artificial Intelligence & Cloud Computing*, vol. 4, no. 6, p. 10, Nov. 2025, doi: [https://doi.org/10.47363/jaicc/techfusion2025/2025\(4\)10](https://doi.org/10.47363/jaicc/techfusion2025/2025(4)10).
- [6] L. G. Di Maggio, "Predictive Maintenance MCP: An Open-Source Framework for Bridging Large Language Models and Industrial Condition Monitoring via the Model Context Protocol," *Applied Sciences*, vol. 16, no. 6, p. 2812, Mar. 2026, doi: <https://doi.org/10.3390/app16062812>.
- [7] J. Sarkar and G. Agnihotram, "Model Context Protocol: The Central Nervous System for a New Generation of Artificially Intelligent Agents," *Scientific Journal of Computer Science*, vol. 1, no. 2, pp. 84–93, Nov. 2025, doi: <https://doi.org/10.64539/sjcs.v1i2.2025.327>.
- [8] J.-W. Ahn and H.-Y. Kwon, "Privacy Threats and Policy Responses to the Use of AI Agents : Focusing on the Model Context Protocol Environment," *Journal of Korean Institute of Intelligent Systems*, vol. 35, no. 6, pp. 541–553, Dec. 2025, doi: <https://doi.org/10.5391/jkiis.2025.35.6.541>.
- [9] Anand Laxman Mhatre, "Microservices Architecture Using Docker and Kubernetes," *International Journal For Multidisciplinary Research*, vol. 5, no. 5, Oct. 2023, doi: <https://doi.org/10.36948/ijfmr.2023.v05i05.12095>.
- [10] V. K. Adari, "Optimizing Cloud-Native Machine Learning Pipelines Using ARAS-Based Multi-Criteria Decision Analysis," *International Journal of Computer Science and Data Engineering*, vol. 2, no. 4, pp. 1–7, 2025, doi: <https://doi.org/10.55124/csdb.v2i4.256>.
- [11] C. Jeong, "A Practical MCP×A2A Integration Framework for Interoperability in LLM-Based Autonomous Multi-Agent Systems," *Journal of Intelligence and Information Systems*, vol. 31, no. 3, pp. 141–170, Sep. 2025, doi: <https://doi.org/10.13088/jiis.2025.31.10.141>.
- [12] C. Zhu, Mehdi Dastani, and S. Wang, "Correction: A survey of multi-agent deep reinforcement learning with communication," *Autonomous Agents and Multi-Agent Systems*, vol. 38, no. 1, Mar. 2024, doi: <https://doi.org/10.1007/s10458-024-09644-x>.

- [13] K. Jones, “Design of Scalable Architecture for Real-Time Parallel Computation of Long to Ultra-Long Real-Data DFTs,” *Engineering: Open Access*, vol. 2, no. 4, pp. 01-11, Nov. 2024, doi: <https://doi.org/10.33140/ea.02.04.04>.
- [14] D. Seenivasan, “Real-Time Data Processing with Streaming ETL,” *International Journal of Science and Research (IJSR)*, vol. 12, no. 11, pp. 2185–2192, Nov. 2023, doi: <https://doi.org/10.21275/sr24619000026>.
- [15] H. Tebourbi *et al.*, “BPMN-Based Design of Multi-Agent Systems: Personalized Language Learning Workflow Automation with RAG-Enhanced Knowledge Access,” *Information*, vol. 16, no. 9, p. 809, Sep. 2025, doi: <https://doi.org/10.3390/info16090809>.
- [16] Siva Prakash Bikka, “Modern Workflow Automation Architecture Patterns: Contemporary Design Approaches for Enterprise Digital Transformation,” *Journal of Information Systems Engineering and Management*, vol. 11, no. 2s, pp. 1507–1517, Feb. 2026, doi: <https://doi.org/10.52783/jisem.v11i2s.14634>.
- [17] V. K. Malthummeda, “Agentic Leave and Dispatch Automation for Trucking Fleets Using MCP and LLMs,” *International Journal of AI, BigData, Computational and Management Studies*, vol. 7, no. 1, pp. 70–73, 2026, doi: <https://doi.org/10.63282/3050-9416.ijaibdcms-v7i1p111>.
- [18] Dharam Pal Singh, “Adaptive Data Pipeline Architectures for Evolving Fraud Patterns Using Graph ML,” *International Journal of Sustainability and Innovation in Engineering*, vol. 4, no. 1, Mar. 2026, doi: <https://doi.org/10.56830/ijsie202603>.
- [19] N. Gupta and S. Heggond, “Agentic artificial intelligence-driven tutoring: A multi-agent cognitive architecture for personalized adaptive learning in Education,” *International Journal of Applied Resilience and Sustainability*, vol. 2, no. 2, pp. 572–598, Feb. 2026, DOI: <https://doi.org/10.70593/deepsci.0202022>.