

# NexGen Linkup Placements with Senior Expertise

Priti Joshi

Computer Engineering Department  
Vivekanand Education Society's  
Institute of Technology Mumbai,  
India

Diya Janyani

Computer Engineering Department  
Vivekanand Education Society's  
Institute of Technology Mumbai,  
India

Ritika Vanjarani

Computer Engineering Department  
Vivekanand Education Society's  
Institute of Technology Mumbai,  
India

Sagar Kishnani

Computer Engineering Department  
Vivekanand Education Society's Institute of  
Technology Mumbai, India

Sahil Kishnani

Computer Engineering Department  
Vivekanand Education Society's Institute of  
Technology Mumbai, India

## ABSTRACT

The "NexGen Linkup: Placements with senior expertise" project presents a novel and innovative platform designed to revolutionize the process of placements by fostering meaningful connections between junior students and their experienced senior counterparts. In a rapidly evolving job market, the project aims to address the challenges faced by aspiring individuals during their transition from academia to professional life. By leveraging technology to facilitate mentorship, knowledge sharing, and guidance, NexGen Linkup seeks to empower juniors with valuable insights, enhance their employability, and ultimately propel them towards successful career placements. This abstract provides an overview of the NexGen Linkup project, highlighting its key features, benefits, and potential to reshape the way students approach their career aspiration.

## Keywords

NexGen

## 1. INTRODUCTION

In an era where the journey from education to employment is marked by both boundless opportunities and fierce competition, the role of guidance and mentorship has never been more crucial. The "NexGen Linkup: Placements with senior expertise" project recognizes the need for a transformative approach to the placement process, one that not only focuses on academic qualifications but also nurtures the practical skills, insights, and confidence required to excel in the professional world [1]. This project introduces a dynamic and interactive platform that establishes a bridge between junior students, eager to embark on their careers, and their seasoned senior counterparts who have successfully navigated the complex terrain of placements [5].

NexGen Linkup is beyond just a digital interface; it signifies a shift in the paradigm of how we view career development. By providing a structured environment for juniors to connect with mentors, the project enables a seamless exchange of knowledge, experiences, and advice [4]. Through this innovative platform, juniors gain access to a wealth of practical insights, industry trends, and interview strategies, all while fostering relationships that extend beyond mere transactions [2]. These interactions facilitate holistic growth, instill a sense of confidence, and imbue students with the skills required to stand out in the competitive job market.

This introduction sets the stage for the exploration of the NexGen Linkup project, delving into its core objectives,

features, and the transformative impact it promises to deliver. As we navigate through the project's components, we will unveil a holistic ecosystem that not only streamlines the placement process but also nurtures a community of learners, mentors, and achievers, united by the shared goal of shaping promising futures.

## 2. MOTIVATION

Building a full-fledged placement cell system is an opportunity to make a real impact on the lives of students, paving the way for their professional success [3]. Your project is not just about coding and design; it's about transforming the future of your peers and the campus community.

Think about the countless students who will benefit from the information, guidance, and resources your system will provide. Picture the moments when a student secures their dream job or a senior's valuable insights help someone make a critical career decision. This is the power your project holds [1].

As you face challenges and obstacles during the development process, remember that each hurdle is a chance to learn and grow. Your dedication and hard work will shine through, and your project will become a testament to your skills and commitment.

Ultimately, your placement cell system will serve as a bridge between dreams and reality, helping students reach their professional goals [6]. Stay motivated, stay focused, and remember that every line of code and every feature you create is a step toward a brighter future for your peers. You've got this!

## 3. LITERATURE SURVEY

### 3.1 Alfiya Banu, Dr. Manju Bargavi S. K, A Research on Placement Management System, International Journal for Research in Applied Science & Engineering Technology, Volume 10, Issue 4, April-2022

The project entails creating a web-based application within the Windows platform for a college's placement management system. This application will serve as a central hub for the college's placement department to store and manage student information securely in a database. Authorized firms can access this database for recruitment purposes using their designated login credentials. The system will capture various details about students, including personal information and technical skills required for drafting comprehensive CVs. Additionally, it will

enable institutions to oversee student information and placement records efficiently. Students will have access to their accounts to upload academic and professional achievements, facilitating personal and academic progress tracking. Ultimately, this initiative aims to streamline administrative tasks, reduce manual efforts, and minimize paper consumption significantly.

**3.2 Swati Choudhary, Monica Landge, Shital Salunke, Swarupata Sutar, Kirti Mhamunkar, Advanced Training and Planning Web Portal, International Journal of Technical Research and Applications, Volume 4, Issue 2, March-April-2016**

The Training and Placement Cell (TPC) plays a pivotal role in the success of any academic institution, especially during times of global economic challenges like the recent recession. Given the impact of such downturns, it becomes imperative for institutions to have robust training and placement cells that can effectively prepare students to navigate real-world challenges. This study delves into the operational dynamics of various training and placement cells across different technical institutions. By examining and analyzing the practices adopted by these cells, valuable insights were gleaned. The study employed a descriptive approach, gathering data through structured questionnaires administered to Training and Placement Officers (TPOs) and final year students. Visits were made to thirty-six engineering colleges in the Mysore region under VTU, Karnataka, following a pilot survey. Subsequently, the collected data underwent rigorous processing and analysis, utilizing graphical representations such as charts and graphs to draw meaningful conclusions.

**3.3 Dr. S.B.Vanjale, Rahul Kumar Modi, Supreet Raj, Akshit Jain, Smart Training & Placement System, International Journal of Computer Science And Technology, Volume 8, Issue 2, April-June-2017.**

This system aims to streamline and automate traditional training and placement management processes. It serves as an application designed for Training & Placement Officers (TPOs) in colleges, facilitating efficient management of student information related to placements and offering support through an assistance portal. Within this portal, students can submit queries to TPOs and coordinators. Moreover, students have access to a personalized login to update their personal and educational details, upload resumes, and access preparation materials for placements. Notably, the system includes a Company Tab feature, aiding companies in shortlisting eligible students based on specified criteria. By automating tasks, minimizing paperwork, and enhancing efficiency, this system optimizes time utilization. The front end is constructed using CSS, Bootstrap, and HTML, while the backend utilizes Java, Servlets, and JSPs. Database management is handled through MYSQL database.

**3.4 Shamala S., Angadi, Gomatesh, M. Ravanavar, A Study And Analysis Of Training And Placement Cells In Engineering Colleges, International Journal of Management, IT and Engineering, Volume 4, Issue 10, October 2014.**

The Training and Placement Cell (TPC) serves as a cornerstone of any educational institution, particularly during times of global economic instability, such as the recent recession that impacted nations worldwide. In such challenging circumstances, the necessity for robust training and placement cells within institutions becomes paramount. These cells play a crucial role in equipping students with the necessary skills to confront real-life challenges successfully. This study investigates and evaluates the operations of various training and placement cells across diverse technical institutions. It identifies and highlights certain exemplary practices adopted by select TPCs.

Employing a descriptive approach, data for the study was collected through surveys administered to Training and Placement Officers (TPOs) and final-year students. Utilizing structured questionnaires. The research covered visits to thirty-six engineering colleges in the Mysore region under VTU, Karnataka, following an initial pilot survey. Subsequently, the gathered data underwent thorough processing and analysis, employing graphical representations such as graphs and charts to elucidate key findings.

**4. PROPOSED IDEA**

**Senior Experience Questionnaire:** A comprehensive questionnaire will be designed for senior students to share their personal experiences and insights regarding various companies they have interviewed with. This information will serve as valuable guidance for juniors preparing for placements.

**Junior Reference and Research:** Junior students can utilize the shared senior experiences along with their own research to gain a better understanding of different companies, interview processes, and expectations. This will empower juniors to make well-informed decisions and preparations.

**Company Dashboard:** A user-friendly dashboard will be created, showcasing a variety of companies that are actively recruiting from the college. When juniors select a specific company, they will have access to the collection of senior experiences related to that company.

**Interactive Chat Feature:** An interactive chat feature will be implemented, enabling juniors to post queries or questions they have about specific companies or the interview process in general. These queries will be broadcast to all senior participants, ensuring a collaborative effort in addressing concerns.

**Summarized Insights:** Through the application of an intelligent algorithm, the shared senior experiences will be analyzed and synthesized. This process will generate concise and informative summaries, referred to as "Last Minute Prep," for each stage of the interview process.

By synergizing the wisdom of experienced seniors and the enthusiasm of juniors, this platform will create an environment of shared knowledge and support, ultimately leading to improved preparation, confidence, and success in the placement process.

## 5. BLOCK DIAGRAM

### 5.1 Admin Module

Login and Authorization: Admins log in securely to access system functionalities.

Database Management: Admins manage the database, overseeing user data, company information, and content moderation.

Questionnaire Generation: Admins can create questionnaires for senior and junior users to facilitate interaction.

### 5.2 Senior Module

Login and Authorization: Seniors log in securely using authorized credentials.

Company Details: Seniors provide company information, enabling juniors to register for drives.

Questionnaire Response: Seniors respond to questionnaires generated by admin, offering insights for juniors.

Doubt Resolution: Seniors help juniors by answering their doubts and sharing valuable career guidance.

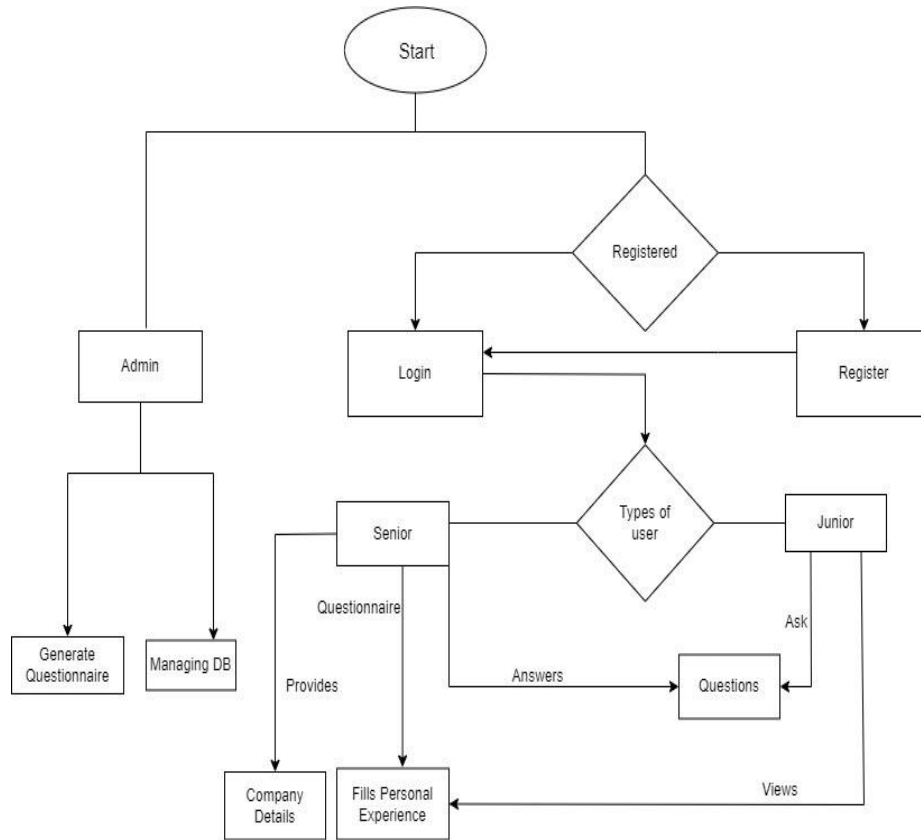


Fig No. 1- Block Diagram

### 5.3 Junior Module:

Login and Authorization: Juniors log in securely with their user credentials.

Doubt Submission: Juniors can ask questions and seek guidance on various placement-related topics.

Questionnaire Access: Juniors access questionnaires filled out by seniors to gain insights into companies and positions.

Drive Registration: Juniors can register for company drives to explore job opportunities.

Upvoting and Downvoting: Juniors have the option to upvote or downvote senior experiences, enhancing the credibility of shared information.

### 5.4 Implementation

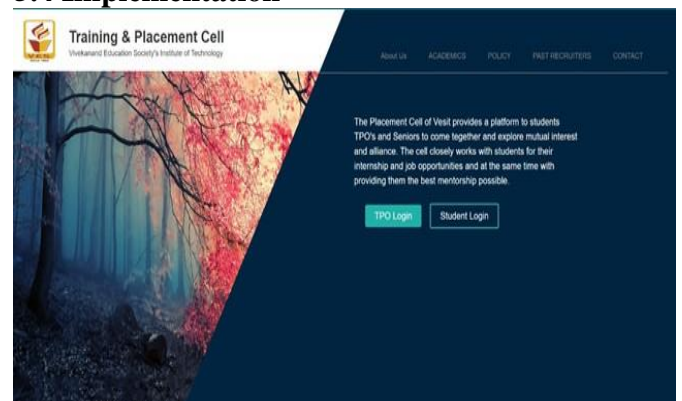


Fig No. 2 - Home Page



Fig No. 3 - Companies



Fig No. 4 - Features

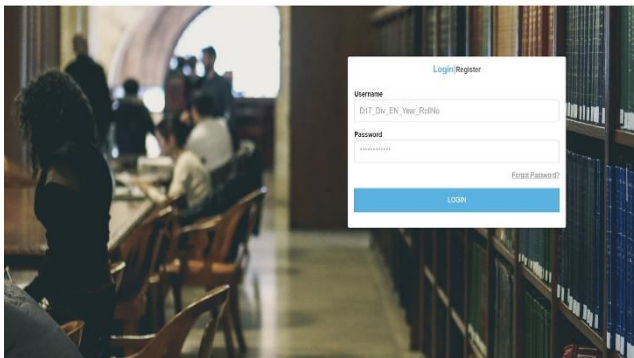


Fig No. 5 - Login

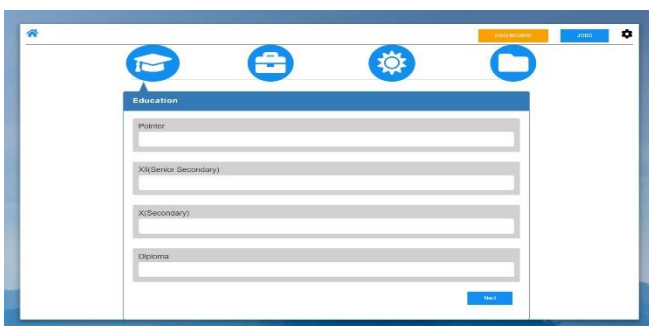


Fig No. 6 - Student Information

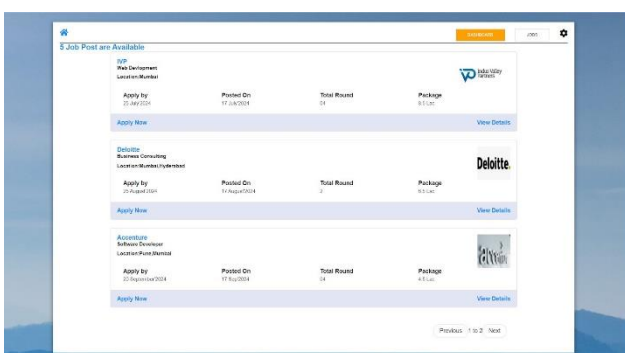


Fig No. 7 - Company Details



Fig No. 8 - TheGram

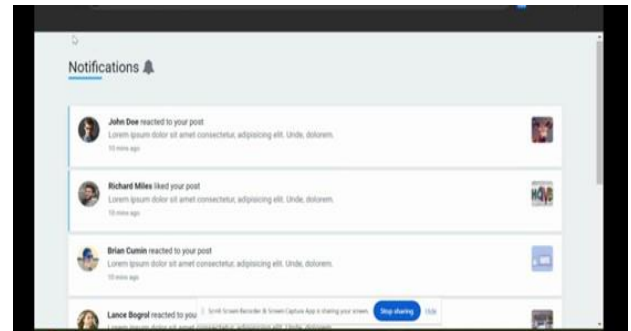


Fig No. 9 - Notifications

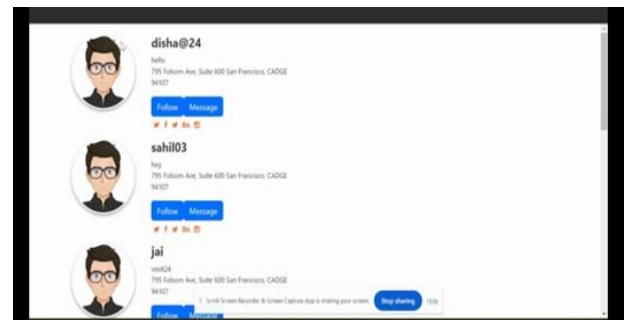


Fig No. 10 - Suggestions

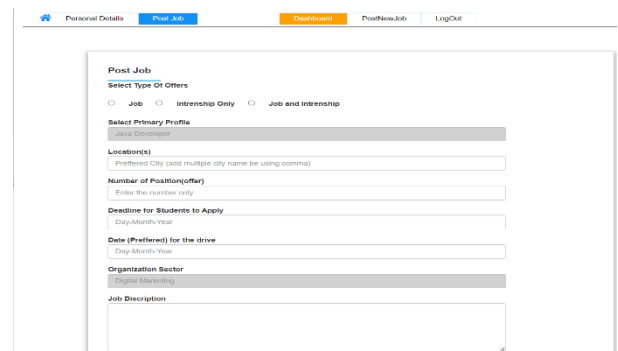


Fig No. 11 - Post Job

## 6. CONCLUSION

In conclusion, the envisioned website developed by the Training and Placement Cell will serve as an indispensable resource for students and job seekers. With its user-friendly interface and comprehensive database, the platform will empower users to effortlessly search for colleges of their choice. Once a college is selected, the website will provide valuable insights into the professional world, showcasing the number of companies that have visited the college, the corresponding count of students those companies have hired, and the specific interview questions posed by these companies.

By offering direct links to practice questions related to these interviews, the website not only improves the preparation process but also enhances students' overall employability. Moreover, the platform will celebrate success stories by highlighting a list of students who have successfully secured positions in these companies, inspiring others to aim high and strive for excellence.

In essence, this website will bridge the gap between academic institutions and the corporate sector, providing a holistic approach to career development. It will empower students with actionable insights, promote effective interview preparation, and celebrate the achievements of the student community. As a result, the Training and Placement Cell's website will play a pivotal role in nurturing a talented and well-prepared workforce, contributing significantly to the growth of both individuals and industries.

## **7. REFERENCES**

- [1] Alfiya Banu, Dr. Manju Bargavi S. K, *A Research on Placement Management System*, International Journal for Research in Applied Science & Engineering Technology, Volume 10, Issue 4, April 2022.
- [2] Swati Choudhary, Monica Landge, Shital Salunke, Swarupata Sutar, Kirti Mhamunkar, *Advanced Training and Planning Web Portal*, International Journal of Technical Research and Applications, Volume 4, Issue 2, March-April-2016.
- [3] Dr. S.B.Vanjale, Rahul Kumar Modi, Supreet Raj, Akshit Jain, *Smart Training & Placement System*, International Journal of Computer Science And Technology, Volume 8, Issue 2, April-June-2017.
- [4] Maryam Sayyed, Faiza Umatiya, Seemab Zehera, Prof. Shiburaj Pappu, *College Placement Management System*, International Journal of Creative Research Thoughts, Volume 8, Issue 6, June 2020.
- [5] Farheen Taqi Rizvi, Naushin A. Khan, Saurabh Upadhyay, Sonali Suryawanshi, Shiburaj Pappu, *Placement Management System*, Journal of Emerging Technologies and Innovative Research, Volume 8, Issue 4, April 2021.
- [6] Shamala S., Angadi, Gomatesh, M. Ravanavar, *A Study And Analysis Of Training And Placement Cells In Engineering Colleges*, International Journal of Management, IT and Engineering, Volume 4, Issue 10, October 2014.